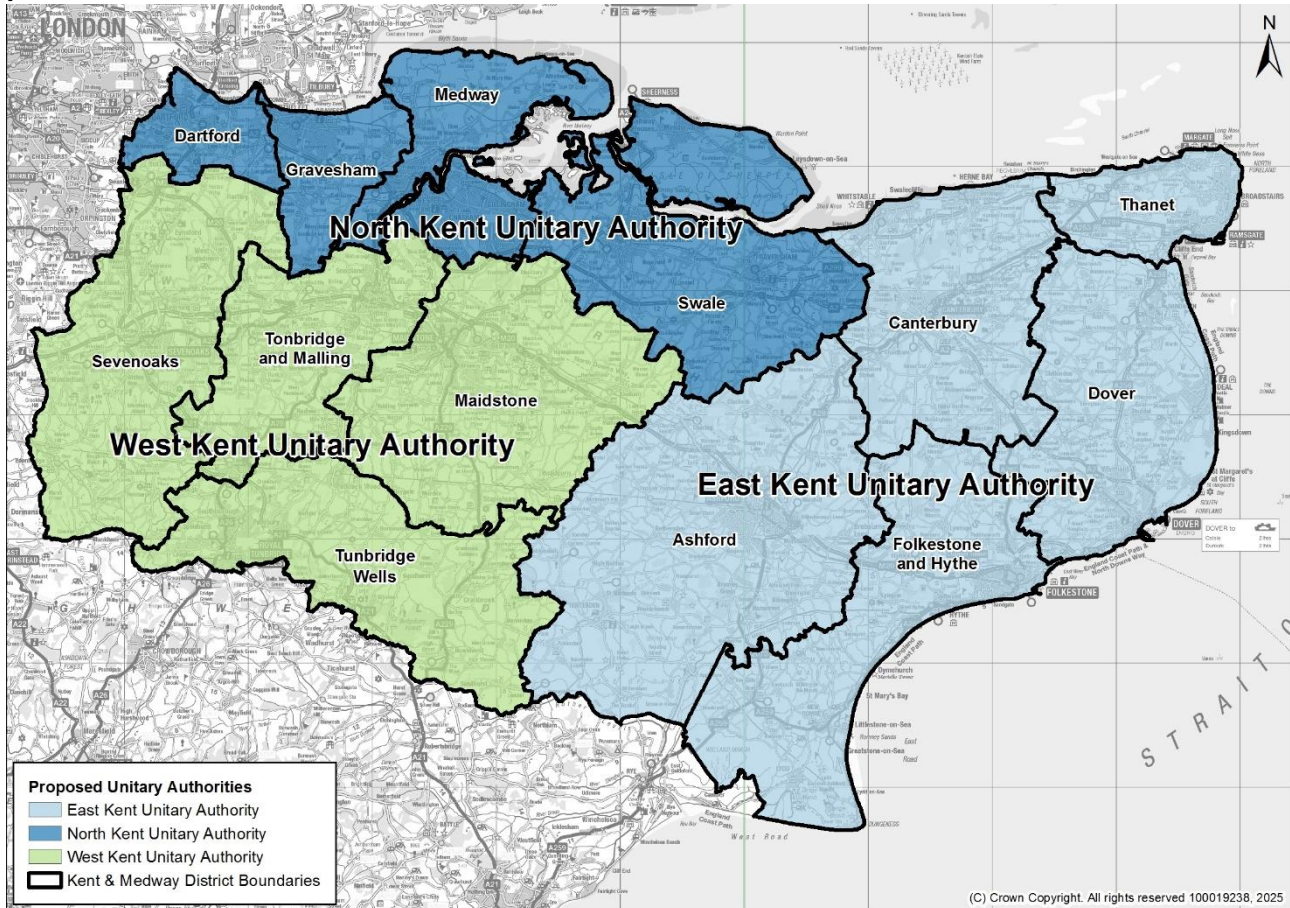


## Profiles for Unitary Options

### Model 1 (three unitaries, NEW)

<b>Model 1 (three unitaries):</b>	<b>North</b> (Dartford, Gravesham, Medway, Swale)
	<b>East</b> (Ashford, Canterbury, Dover, Folkestone and Hythe, Thanet)
	<b>West</b> (Maidstone, Sevenoaks, Tonbridge and Malling, Tunbridge Wells)

#### Map

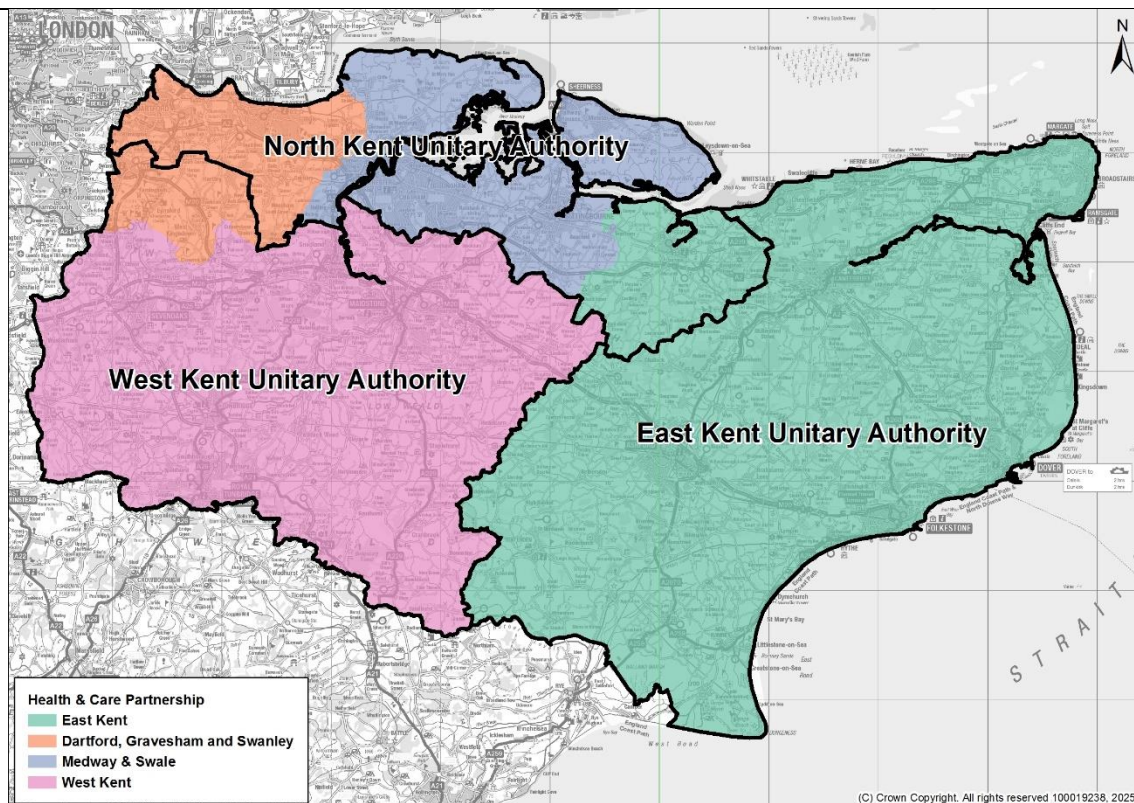


Population:	Potential Unitary	District	District population (mid-2022)	Unitary population (mid-2022)	Potential growth by 2035*
<b>North Kent</b>		Dartford	118,820	<b>663,111</b>	<b>41k to 96k</b>
		Gravesham	106,970		
		Medway	282,702		
		Swale	154,619		
<b>East Kent</b>		Ashford	135,610	<b>661,559</b>	<b>53k to 103k</b>
		Canterbury	157,550		
		Dover	117,473		
		Folkestone and Hythe	110,237		
		Thanet	140,689		
<b>West Kent</b>		Maidstone	180,428	<b>551,223</b>	<b>39k to 72k</b>
		Sevenoaks	121,106		
		Tonbridge and Malling	133,661		
		Tunbridge Wells	116,028		

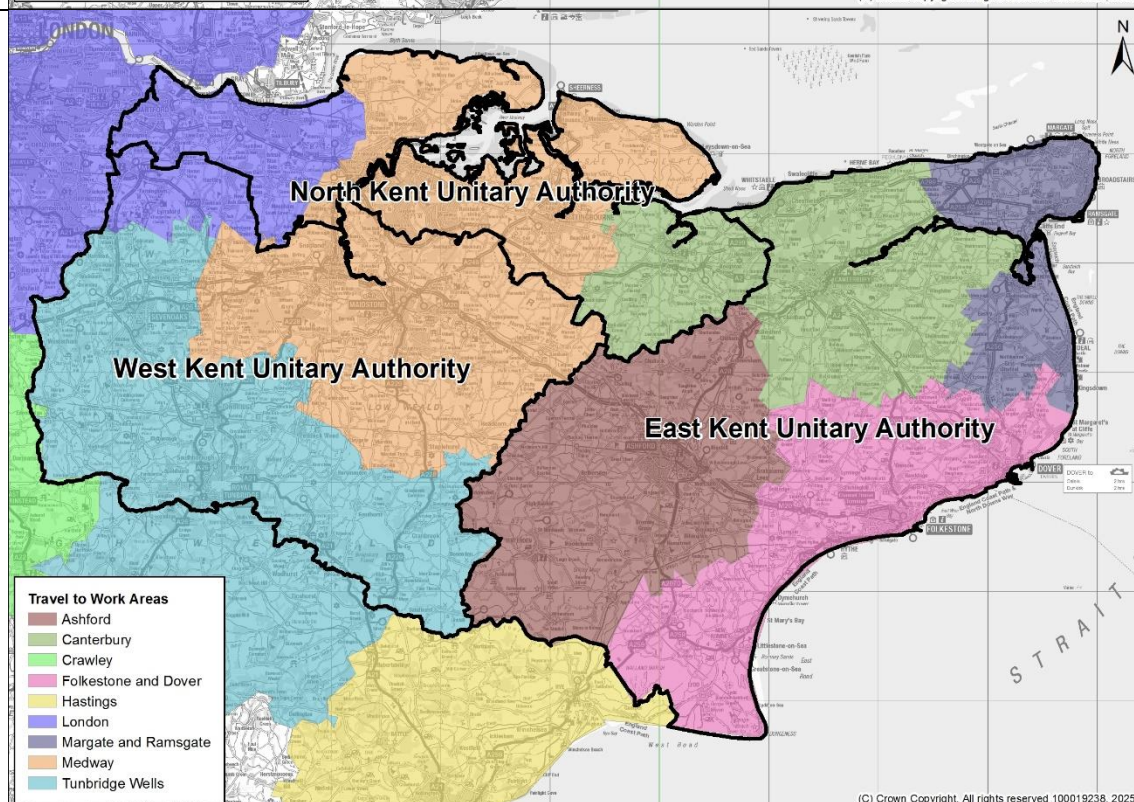
\*Two estimates based off the % growth between 2022 and 2035 for each district from: a) the ONS Sub-National Population Projections and b) the KCC Housing Led Forecast. Weighted by each district's contribution towards the UA's total population (2022 MYE).



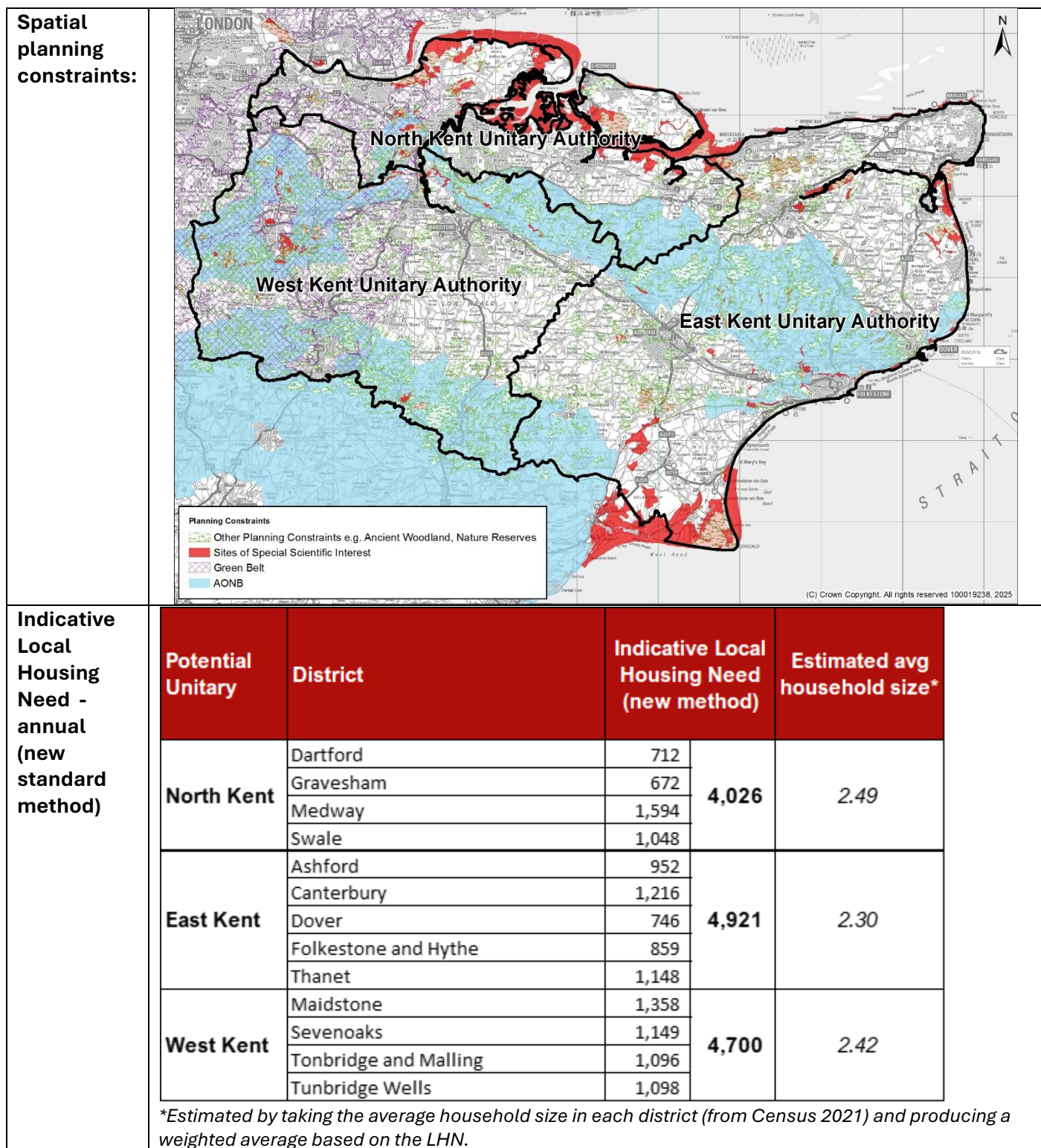
**NHS Health  
& Care  
Partnership  
alignment:**



**Travel to  
Work  
Areas:**







## Population composition

	North	East	West	Kent	England & Wales
Population aged 0-15	21.0%	17.5%	19.8%	19.4%	18.4%
Population aged 16-64	62.3%	59.5%	60.2%	60.7%	62.8%
Population aged 65+	16.7%	23.0%	20.0%	19.9%	18.8%

\*based on mid-2023 population estimate

## Deprivation

Index of Multiple Deprivation 2019 (combining indicators under seven different domains of deprivation: Income Deprivation; Employment Deprivation; Education Skills and Training Deprivation; Health Deprivation and Disability; Crime; Barriers to Housing and Services and Living Environment Deprivation).

	North	East	West	Kent
% LSOAs in top 10%	8.9%	7.8%	0.6%	6.1%

## Disability benefit claimants

Proportion of working age people claiming disability benefits (AA+DLA+PIP) from the DWP in November 2024

	North	East	West	Kent	England & Wales
% of 16-64s claiming AA/DLA/PIP	17.8%	21.7%	14.6%	18.2%	17.2%

## Unemployment

Proportion of people receiving benefits for unemployment (Jobseekers Allowance and out of work Universal Credit claimants) in May 2025

	North	East	West	Kent	England & Wales
Unemployment: % of 18-64s claiming	4.1%	4.0%	2.8%	3.7%	4.3%
Youth unemployment: % of 18-24s claiming	7.0%	6.2%	4.6%	6.1%	5.5%

## Qualifications (from Census 2021)

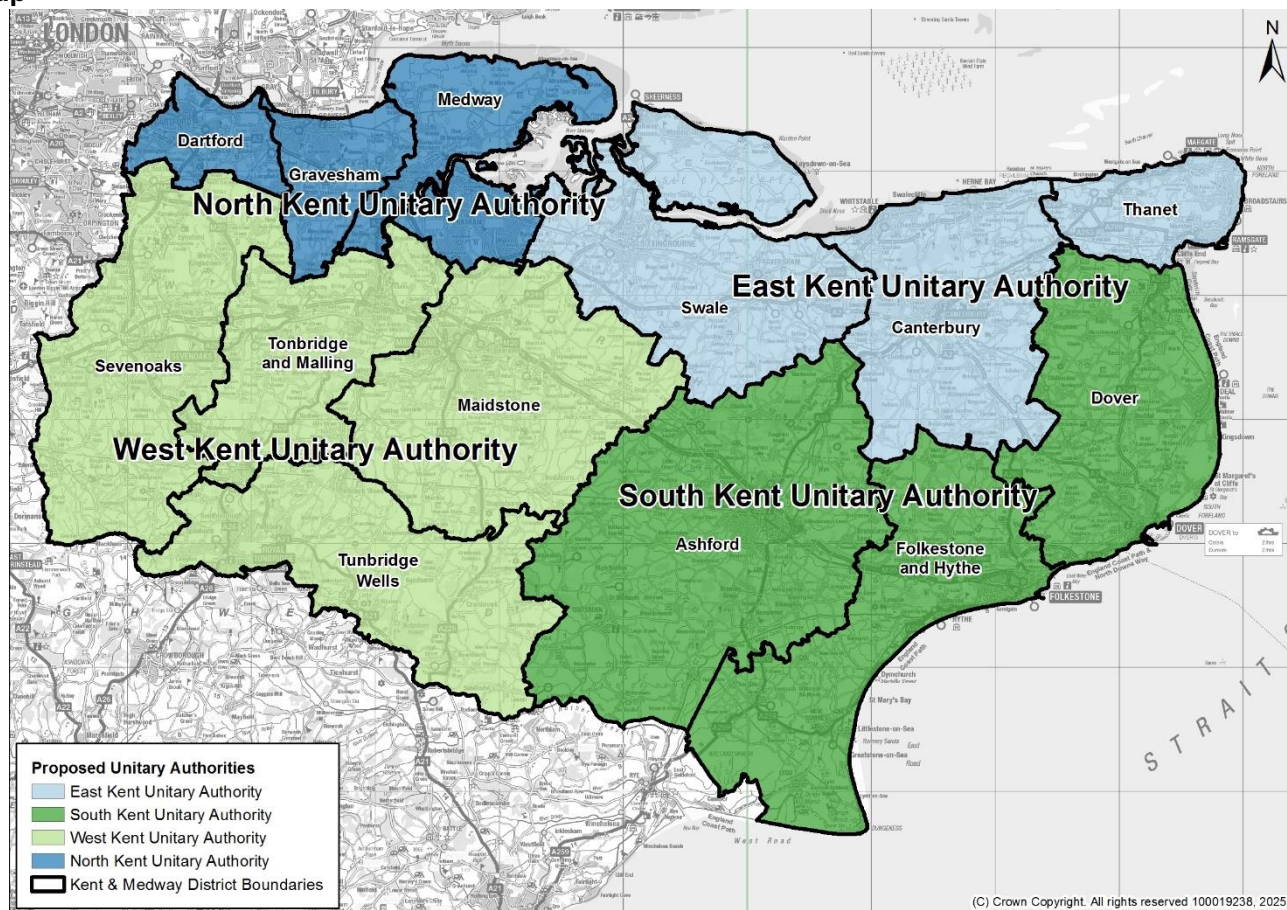
Highest level of Qualification of people aged 16+ from the 2021 Census.

	North	East	West	Kent	England & Wales
% with Level 2 qualification or higher	65.5%	67.4%	71.6%	68.0%	69.4%
% with Level 4 qualification or higher	26.5%	29.0%	34.6%	29.8%	33.8%

## Model 2 (four unitaries, NESW)

<b>Model 2 (four unitaries, NESW):</b>	<b>North</b> (Dartford, Gravesham, Medway) <b>East</b> (Canterbury, Swale, Thanet) <b>South</b> (Ashford, Dover, Folkestone and Hythe) <b>West</b> (Maidstone, Sevenoaks, Tonbridge and Malling, Tunbridge Wells)
--	--

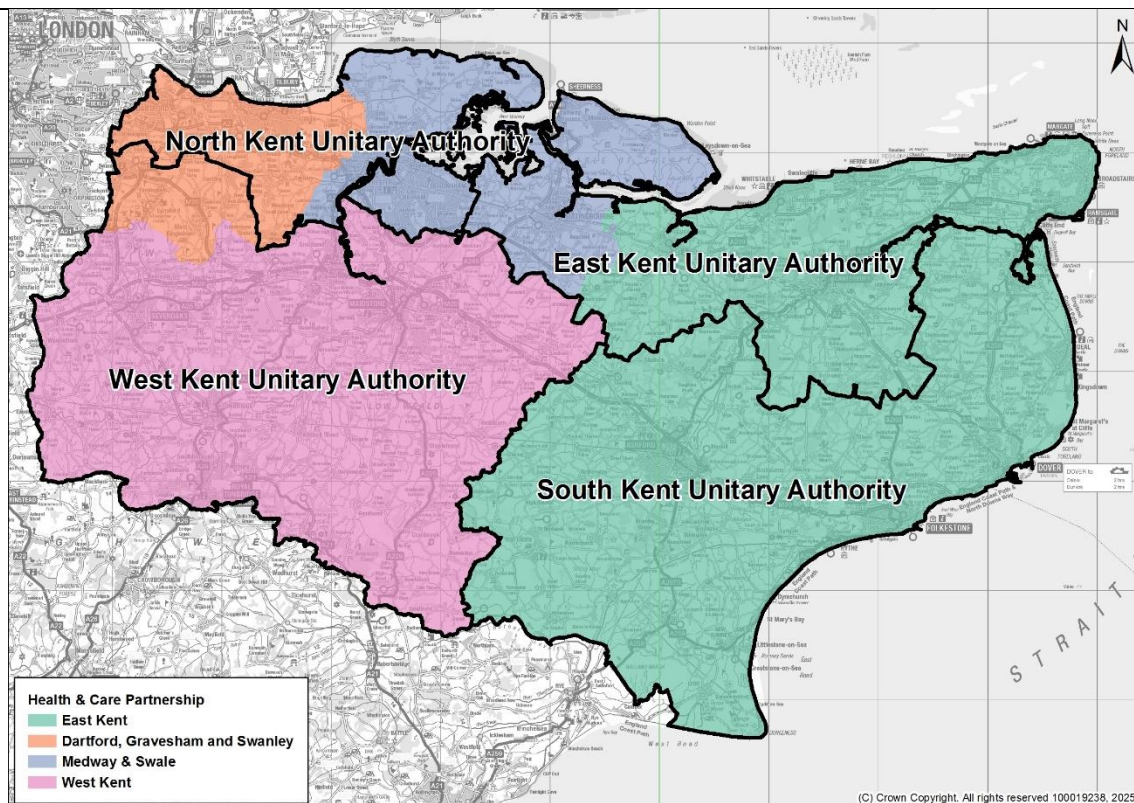
Map



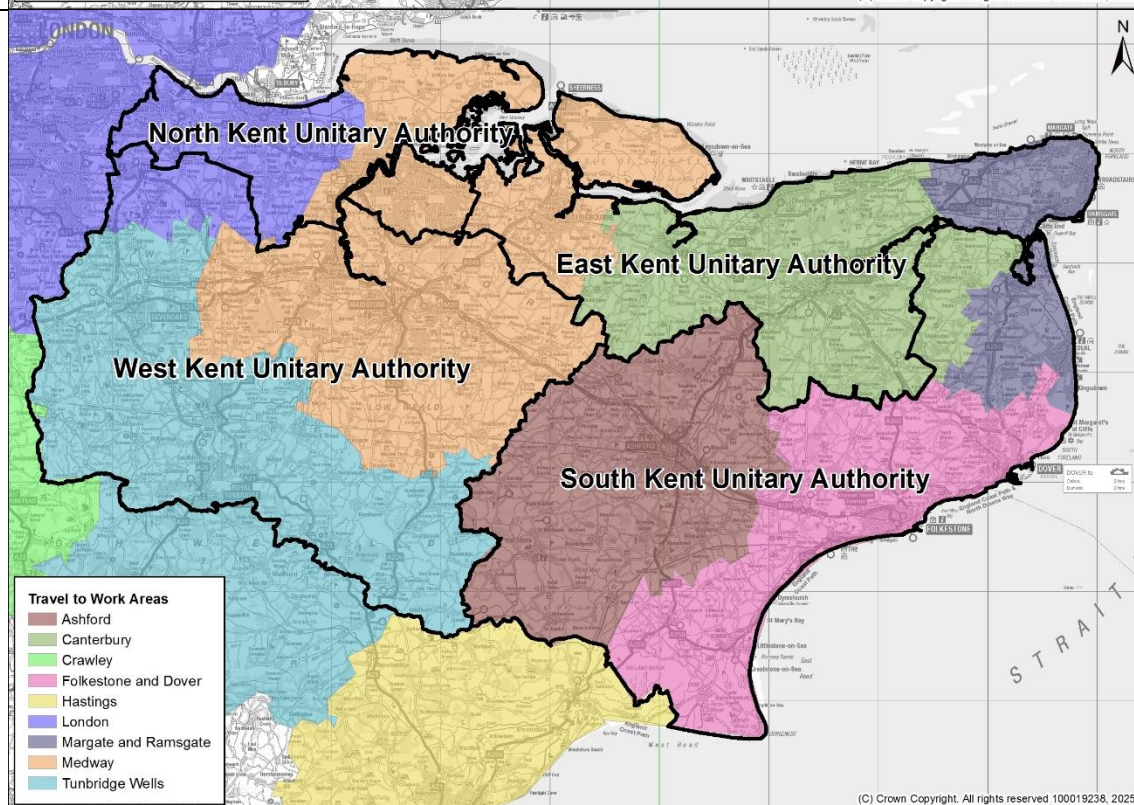
Population:	Potential Unitary	District	District population (mid-2022)	Unitary population (mid-2022)	Potential growth by 2035*
	North Kent	Dartford	118,820	508,492	26k to 77k
		Gravesham	106,970		
		Medway	282,702		
	East Kent	Canterbury	157,550	452,858	32k to 69k
		Swale	154,619		
		Thanet	140,689		
	South Kent	Ashford	135,610	363,320	35k to 53k
		Dover	117,473		
		Folkestone and Hythe	110,237		
	West Kent	Maidstone	180,428	551,223	39k to 72k
		Sevenoaks	121,106		
		Tonbridge and Malling	133,661		
		Tunbridge Wells	116,028		
*Two estimates based off the % growth between 2022 and 2035 for each district from: a) the ONS Sub-National Population Projections and b) the KCC Housing Led Forecast. Weighted by each district's contribution towards the UA's total population (2022 MYE).					



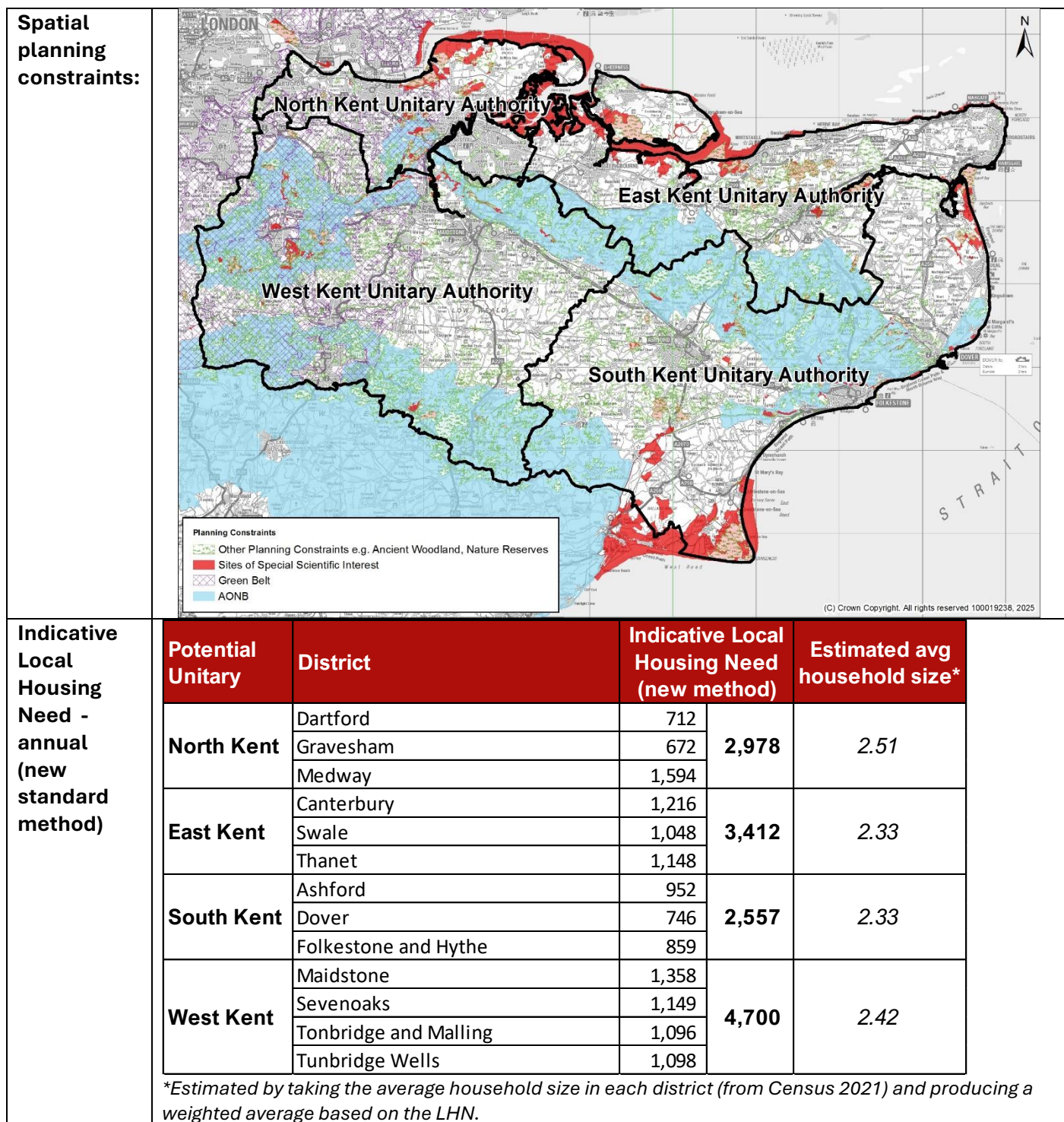
**NHS Health  
& Care  
Partnership  
alignment:**



**Travel to  
Work  
Areas:**







## Population composition

	North	East	South	West	Kent	England & Wales
Population aged 0-15	21.4%	17.9%	18.0%	19.8%	19.4%	18.4%
Population aged 16-64	62.6%	60.4%	59.0%	60.2%	60.7%	62.8%
Population aged 65+	16.0%	21.7%	23.0%	20.0%	19.9%	18.8%

*\*based on mid-2023 population estimate*

## Deprivation

Index of Multiple Deprivation 2019 (combining indicators under seven different domains of deprivation: Income Deprivation; Employment Deprivation; Education Skills and Training Deprivation; Health Deprivation and Disability; Crime; Barriers to Housing and Services and Living Environment Deprivation).

	North	East	South	West	Kent
% LSOAs in top 10%	6.0%	13.9%	4.7%	0.6%	6.1%

## Disability benefit claimants

Proportion of working age people claiming disability benefits (AA+DLA+PIP) from the DWP.

	North	East	South	West	Kent	England & Wales
% of 16-64s claiming AA/DLA/PIP	16.7%	22.0%	21.3%	14.6%	18.2%	17.2%

## Unemployment

Proportion of people receiving benefits for unemployment (Jobseekers Allowance and out of work Universal Credit claimants)

	North	East	South	West	Kent	England & Wales
Unemployment: % of 18-64s claiming	4.2%	4.2%	3.6%	2.8%	3.7%	4.3%
Youth unemployment: % of 18-24s claiming	7.1%	6.0%	6.8%	4.6%	6.1%	5.5%

## Qualifications (from Census 2021)

Highest level of Qualification of people aged 16+ from the 2021 Census.

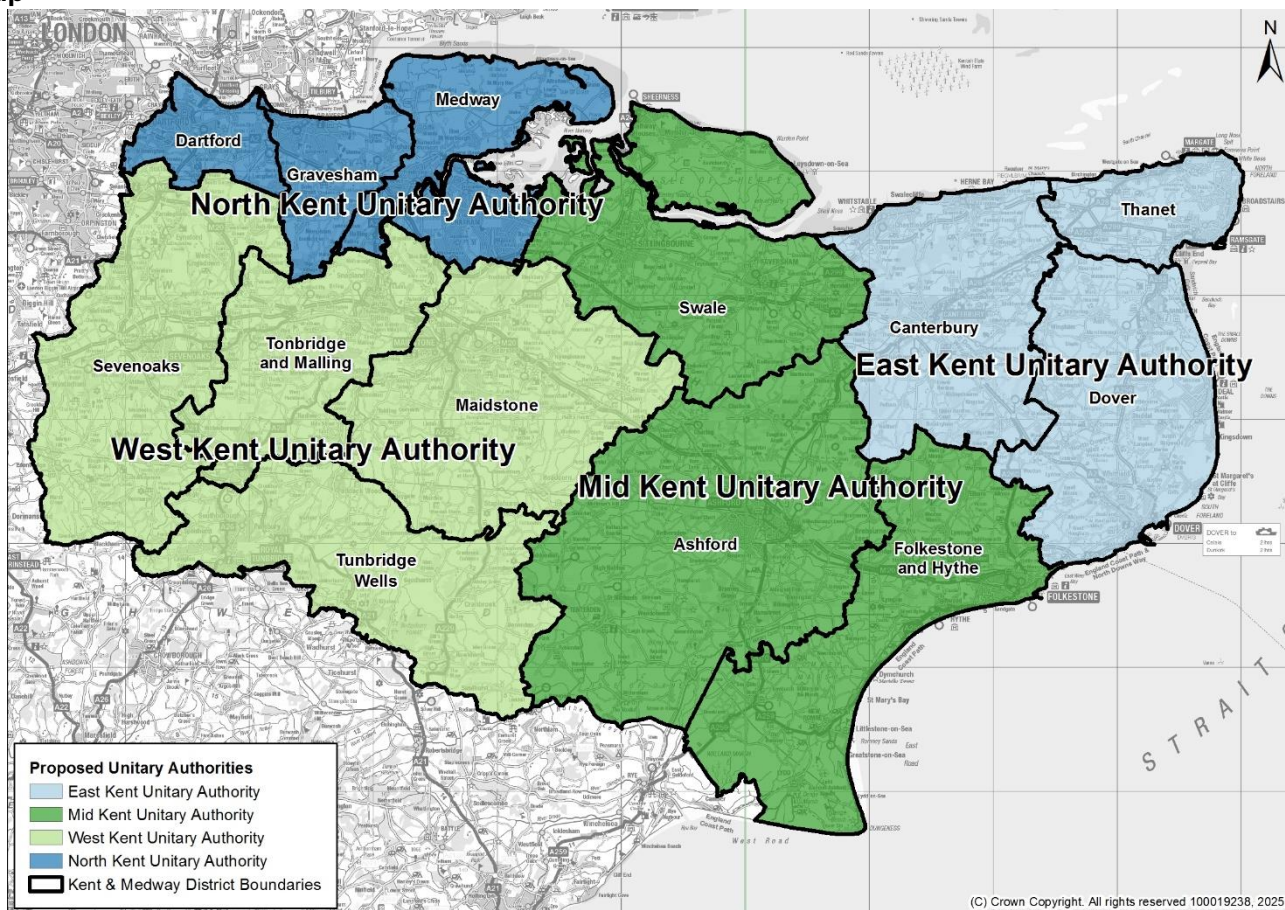
	North	East	South	West	Kent	England & Wales
% with Level 2 qualification or higher	66.3%	66.4%	66.8%	71.6%	68.0%	69.4%
% with Level 4 qualification or higher	27.4%	27.9%	28.2%	34.6%	29.8%	33.8%



## Model 3 (four unitaries, NEMidW)

<b>Model 3 (four unitaries, NEMidW):</b>	<b>North</b> (Dartford, Gravesham, Medway) <b>East</b> (Canterbury, Dover, Thanet) <b>Mid</b> (Ashford, Folkestone and Hythe, Swale) <b>West</b> (Maidstone, Sevenoaks, Tonbridge and Malling, Tunbridge Wells)
--	--

**Map**



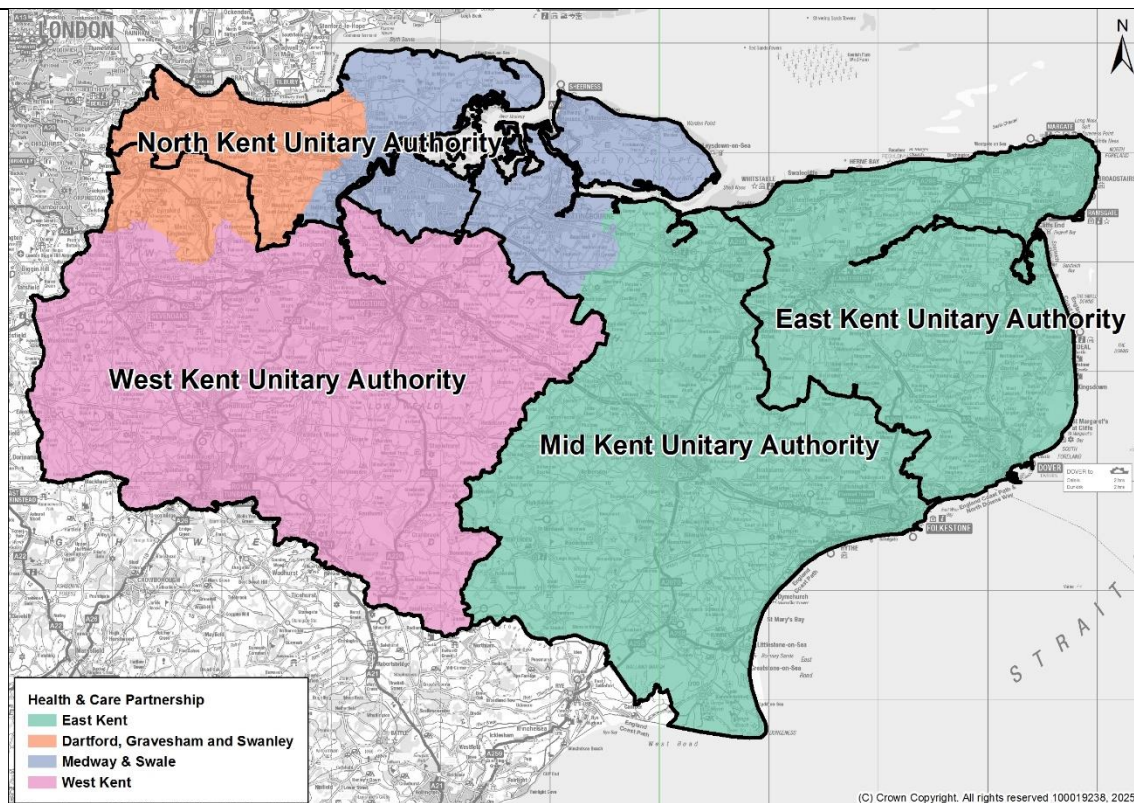
**Population:**

Potential Unitary	District	District population (mid-2022)	Unitary population (mid-2022)	Potential growth by 2035*
<b>North Kent</b>	Dartford	118,820	<b>508,492</b>	26k to 77k
	Gravesham	106,970		
	Medway	282,702		
<b>East Kent</b>	Canterbury	157,550	<b>415,712</b>	30k to 61k
	Dover	117,473		
	Thanet	140,689		
<b>Mid Kent</b>	Ashford	135,610	<b>400,466</b>	38k to 60k
	Folkestone and Hythe	110,237		
	Swale	154,619		
<b>West Kent</b>	Maidstone	180,428	<b>551,223</b>	39k to 72k
	Sevenoaks	121,106		
	Tonbridge and Malling	133,661		
	Tunbridge Wells	116,028		

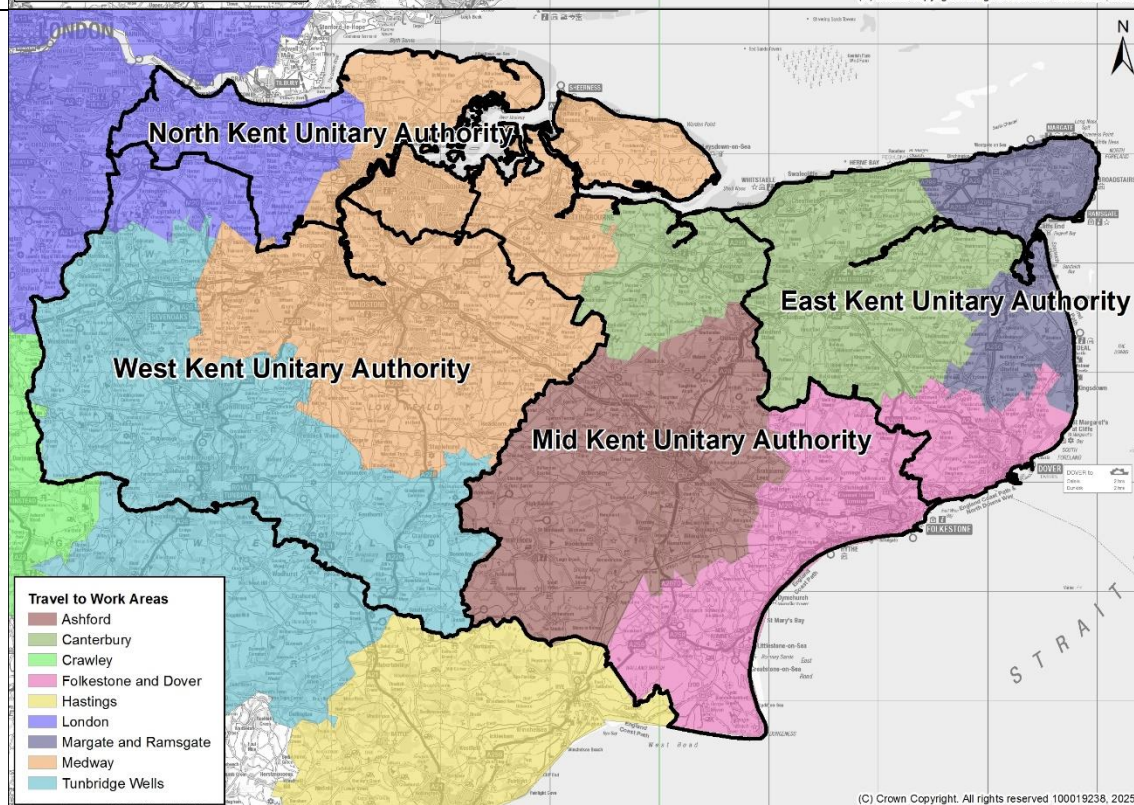
\*Two estimates based off the % growth between 2022 and 2035 for each district from: a) the ONS Sub-National Population Projections and b) the KCC Housing Led Forecast. Weighted by each district's contribution towards the UA's total population (2022 MYE).



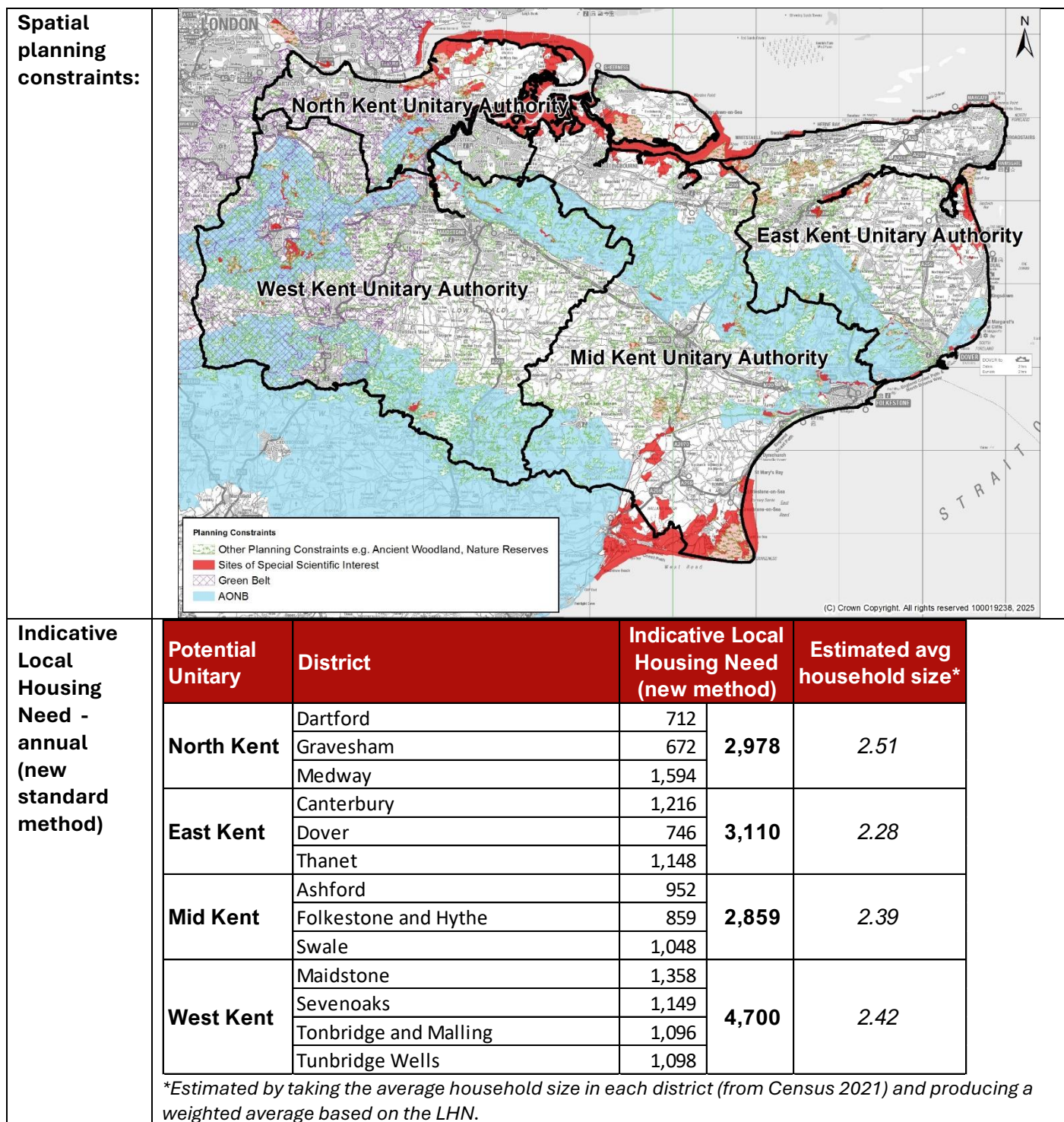
**NHS Health  
& Care  
Partnership  
alignment:**



**Travel to  
Work  
Areas:**







## Population composition

	North	East	Mid	West	Kent	England & Wales
Population aged 0-15	21.4%	17.1%	18.8%	19.8%	19.4%	18.4%
Population aged 16-64	62.6%	59.5%	60.1%	60.2%	60.7%	62.8%
Population aged 65+	16.0%	23.5%	21.1%	20.0%	19.9%	18.8%

\*based on mid-2023 population estimate

## Deprivation

Index of Multiple Deprivation 2019 (combining indicators under seven different domains of deprivation: Income Deprivation; Employment Deprivation; Education Skills and Training Deprivation; Health Deprivation and Disability; Crime; Barriers to Housing and Services and Living Environment Deprivation).

	North	East	Mid	West	Kent
% LSOAs in top 10%	6.0%	10.4%	9.1%	0.6%	6.1%

## Disability benefit claimants

Proportion of working age people claiming disability benefits (AA+DLA+PIP) from the DWP.

	North	East	Mid	West	Kent	England & Wales
% of 16-64s claiming AA/DLA/PIP	16.7%	22.6%	20.8%	14.6%	18.2%	17.2%

## Unemployment

Proportion of people receiving benefits for unemployment (Jobseekers Allowance and out of work Universal Credit claimants)

	North	East	Mid	West	Kent	England & Wales
Unemployment: % of 18-64s claiming	4.2%	4.3%	3.7%	2.8%	3.7%	4.3%
Youth unemployment: % of 18-24s claiming	7.1%	6.1%	6.6%	4.6%	6.1%	5.5%

## Qualifications (from Census 2021)

Highest level of Qualification of people aged 16+ from the 2021 Census.

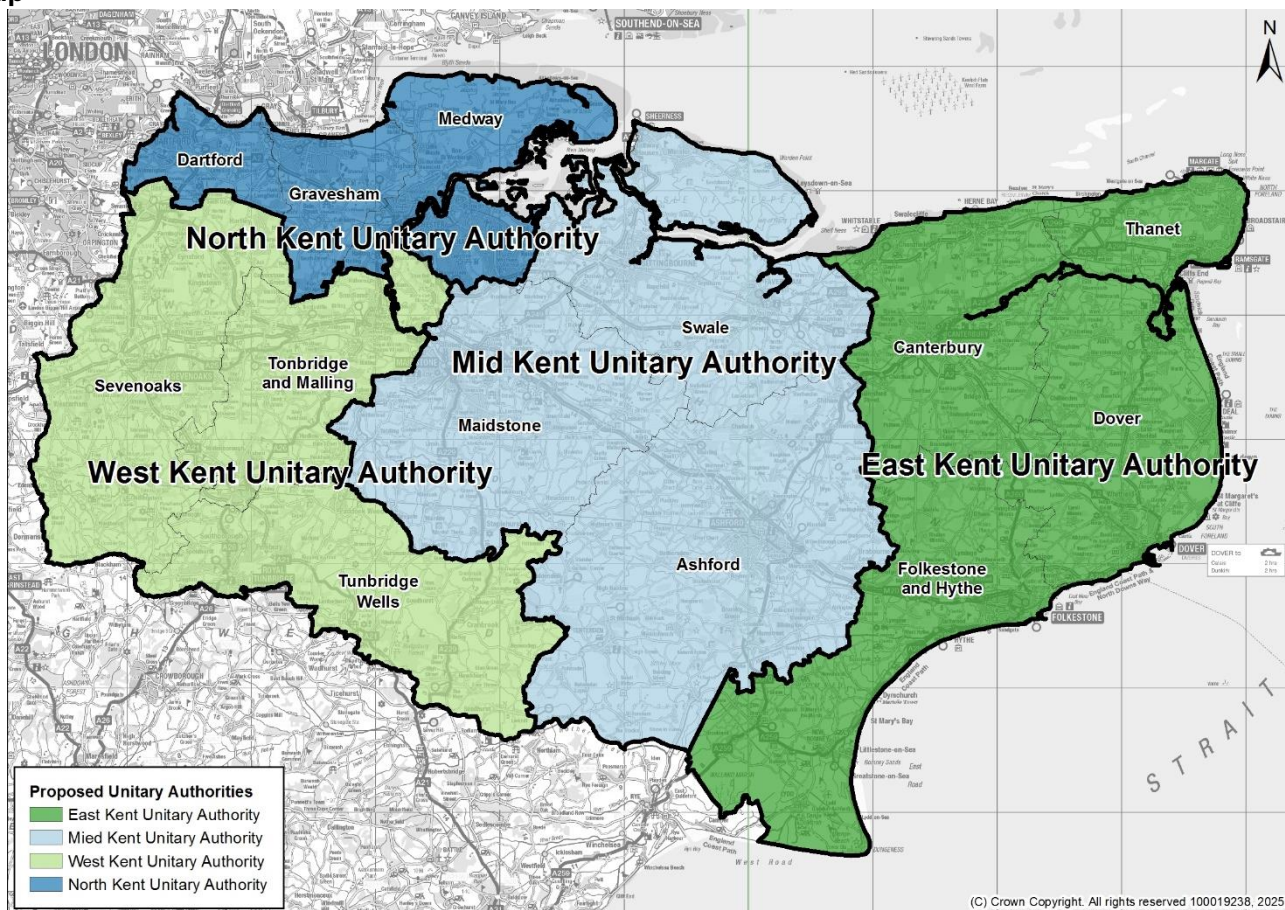
	North	East	Mid	West	Kent	England & Wales
% with Level 2 qualification or higher	66.3%	67.7%	65.4%	71.6%	68.0%	69.4%
% with Level 4 qualification or higher	27.4%	29.1%	26.9%	34.6%	29.8%	33.8%



## Model 4 (four unitaries, NEMidW)

<b>Model 4 (four unitaries, NEMidW):</b>	<b>North</b> (Dartford, Gravesham, Medway) <b>East</b> (Canterbury, Dover, Folkestone and Hythe, Thanet) <b>Mid</b> (Ashford, Maidstone, Swale) <b>West</b> (Sevenoaks, Tonbridge and Malling, Tunbridge Wells)
--	--

### Map



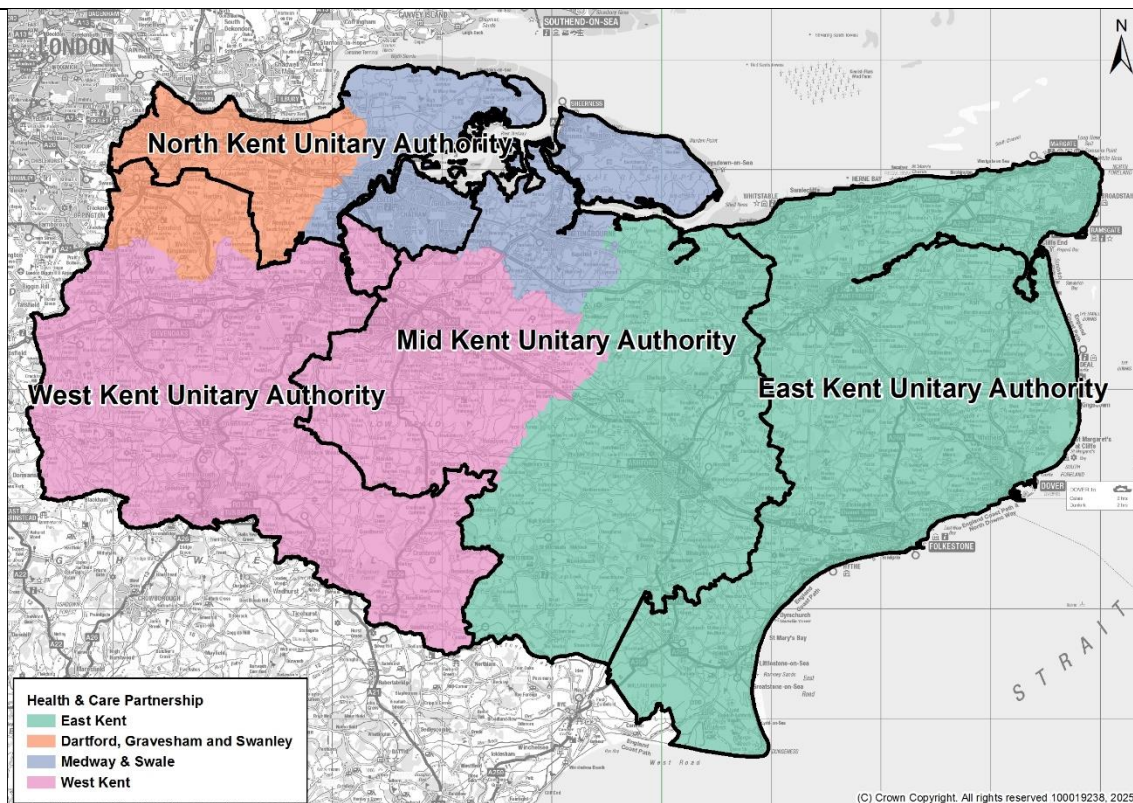
### Population:

Potential Unitary	District	District population (mid-2022)	Unitary population (mid-2022)	Potential growth by 2035*
North Kent	Dartford	118,820	508,492	26k to 77k
	Gravesham	106,970		
	Medway	282,702		
East Kent	Canterbury	157,550	525,949	39k to 75k
	Dover	117,473		
	Folkestone and Hythe	110,237		
	Thanet	140,689		
Mid Kent	Ashford	135,610	470,657	46k to 66k
	Maidstone	180,428		
	Swale	154,619		
	Sevenoaks	121,106		
West Kent	Tonbridge and Malling	133,661	370,795	21k to 52k
	Tunbridge Wells	116,028		

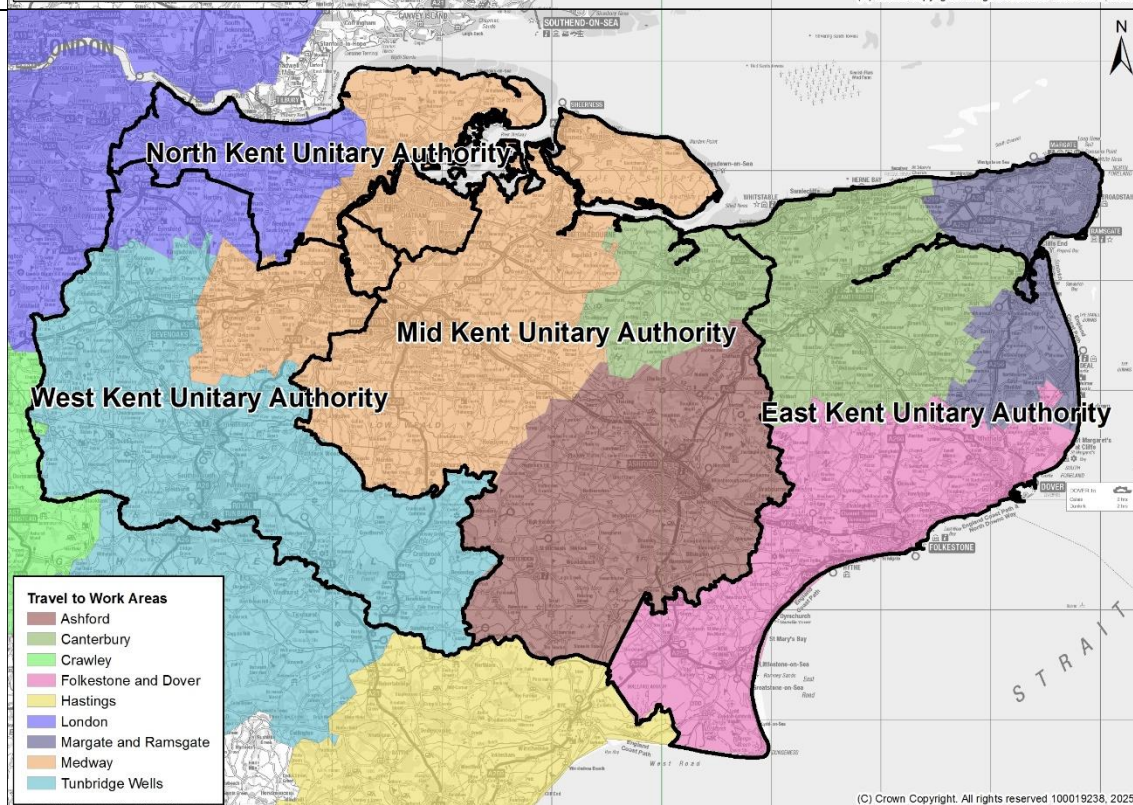
\*Two estimates based off the % growth between 2022 and 2035 for each district from: a) the ONS Sub-National Population Projections and b) the KCC Housing Led Forecast. Weighted by each district's contribution towards the UA's total population (2022 MYE).



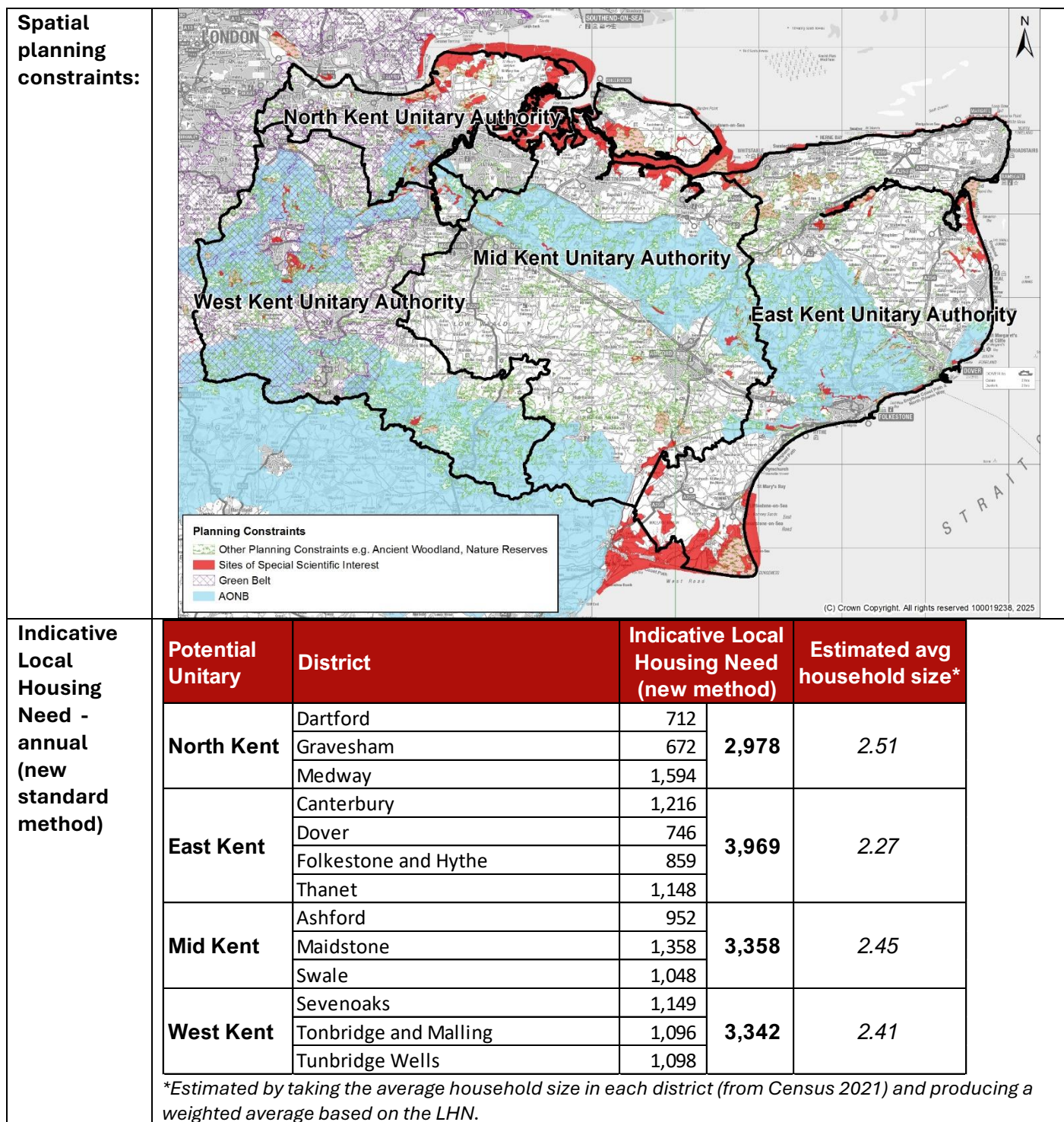
**NHS Health  
& Care  
Partnership  
alignment:**



**Travel to  
Work  
Areas:**







## Population composition

	North	East	Mid	West	Kent	England & Wales
Population aged 0-15	21.4%	16.9%	19.7%	19.9%	19.4%	18.4%
Population aged 16-64	62.6%	59.2%	61.1%	59.6%	60.7%	62.8%
Population aged 65+	16.0%	23.9%	19.2%	20.5%	19.9%	18.8%

*\*based on mid-2023 population estimate*

## Deprivation

Index of Multiple Deprivation 2019 (combining indicators under seven different domains of deprivation: Income Deprivation; Employment Deprivation; Education Skills and Training Deprivation; Health Deprivation and Disability; Crime; Barriers to Housing and Services and Living Environment Deprivation).

	North	East	Mid	West	Kent
% LSOAs in top 10%	6.0%	9.4%	7.4%	0.0%	6.1%

## Disability benefit claimants

Proportion of working age people claiming disability benefits (AA+DLA+PIP) from the DWP.

	North	East	Mid	West	Kent	England & Wales
% of 16-64s claiming AA/DLA/PIP	16.7%	23.0%	17.7%	14.4%	18.2%	17.2%

## Unemployment

Proportion of people receiving benefits for unemployment (Jobseekers Allowance and out of work Universal Credit claimants)

	North	East	Mid	West	Kent	England & Wales
Unemployment: % of 18-64s claiming	4.2%	4.3%	3.4%	2.5%	3.7%	4.3%
Youth unemployment: % of 18-24s claiming	7.1%	6.4%	6.2%	3.8%	6.1%	5.5%

## Qualifications (from Census 2021)

Highest level of Qualification of people aged 16+ from the 2021 Census.

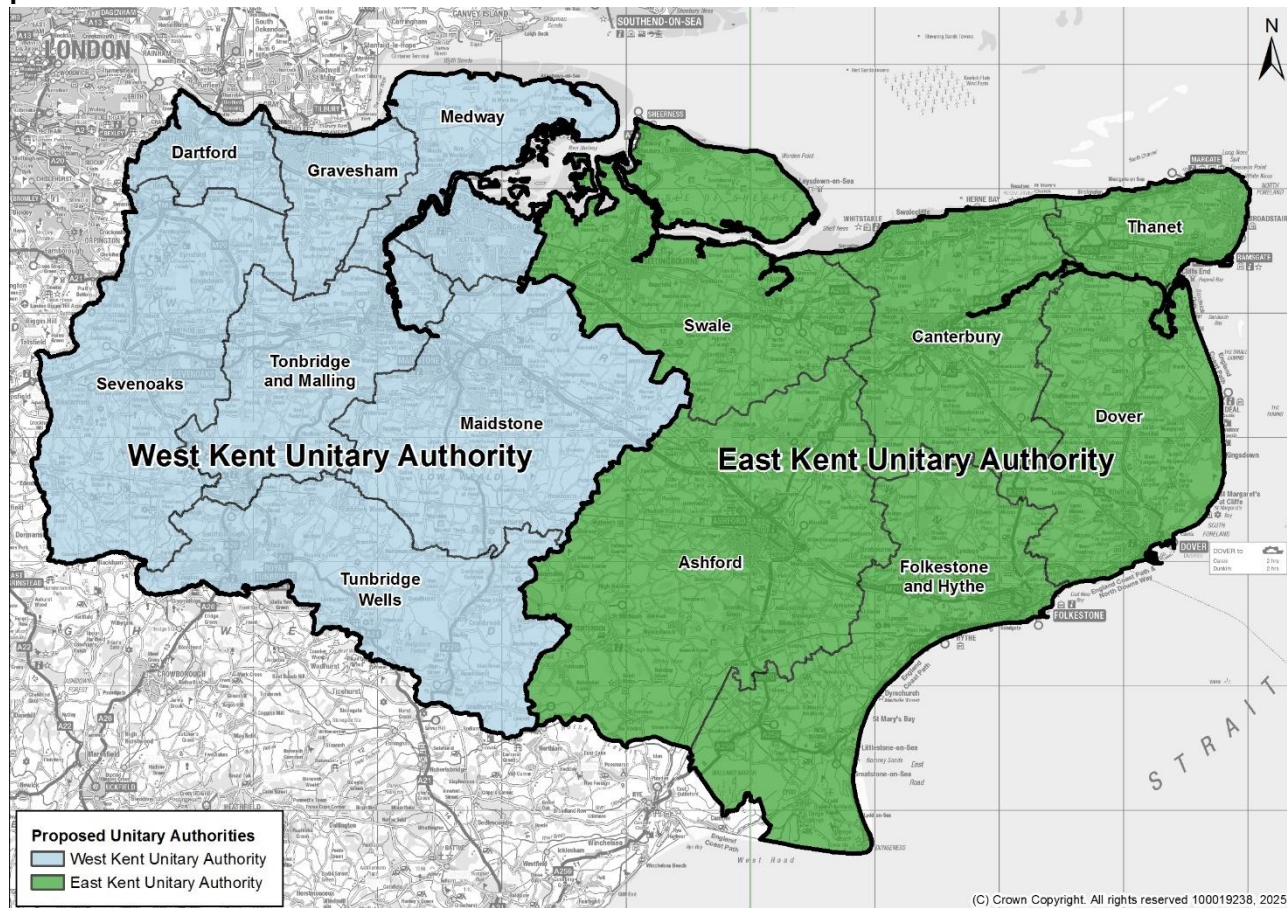
	North	East	Mid	West	Kent	England & Wales
% with Level 2 qualification or higher	66.3%	67.3%	66.6%	73.0%	68.0%	69.4%
% with Level 4 qualification or higher	27.4%	28.7%	27.9%	36.8%	29.8%	33.8%



## Model 5 (two unitaries, EW)

<b>Model 5 (two unitaries, EW):</b>	<b>East</b> (Ashford, Canterbury, Dover, Folkestone and Hythe, Swale, Thanet) <b>West</b> (Dartford, Gravesham, Maidstone, Medway, Sevenoaks, Tonbridge and Malling, Tunbridge Wells)
---	--

### Map

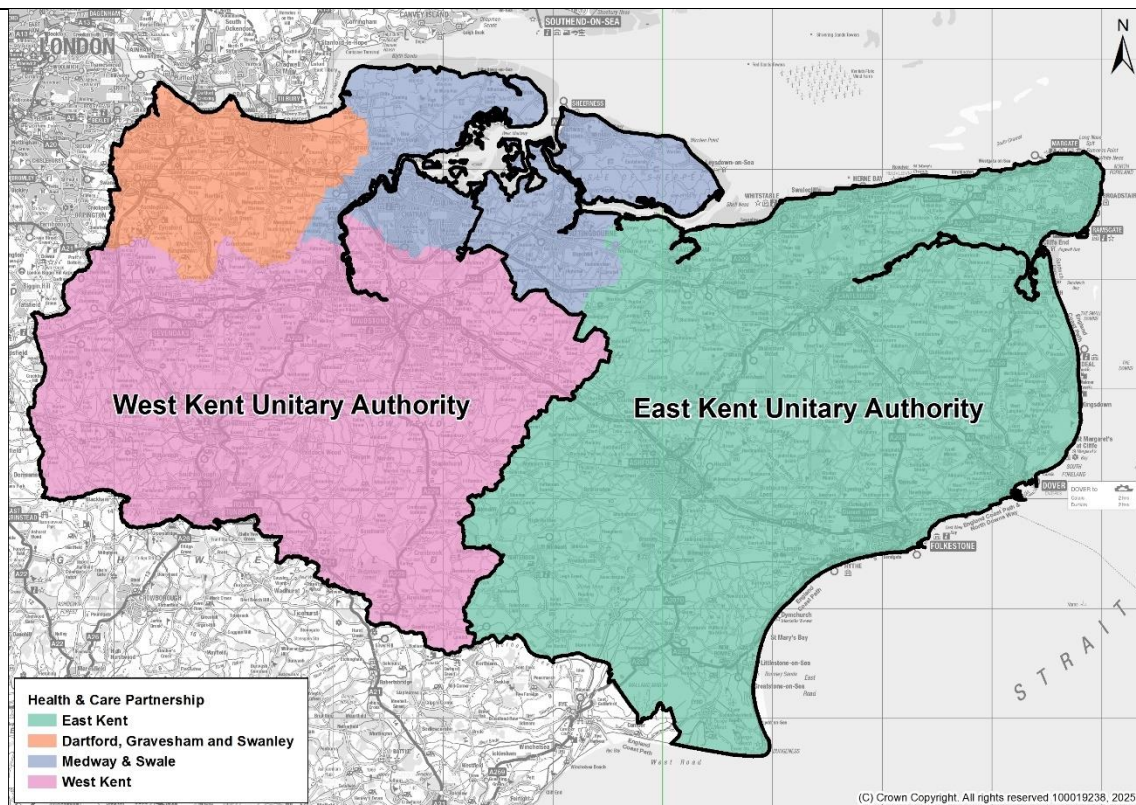


Population:	Potential Unitary	District	District population (mid-2022)	Unitary population (mid-2022)	Potential growth by 2035*
	East Kent	Ashford	135,610	816,178	67k to 121k
		Canterbury	157,550		
		Dover	117,473		
		Folkestone and Hythe	110,237		
		Swale	154,619		
		Thanet	140,689		
	West Kent	Dartford	118,820	1,059,715	65k to 149k
		Gravesham	106,970		
		Maidstone	180,428		
		Medway	282,702		
		Sevenoaks	121,106		
		Tonbridge and Malling	133,661		
		Tunbridge Wells	116,028		

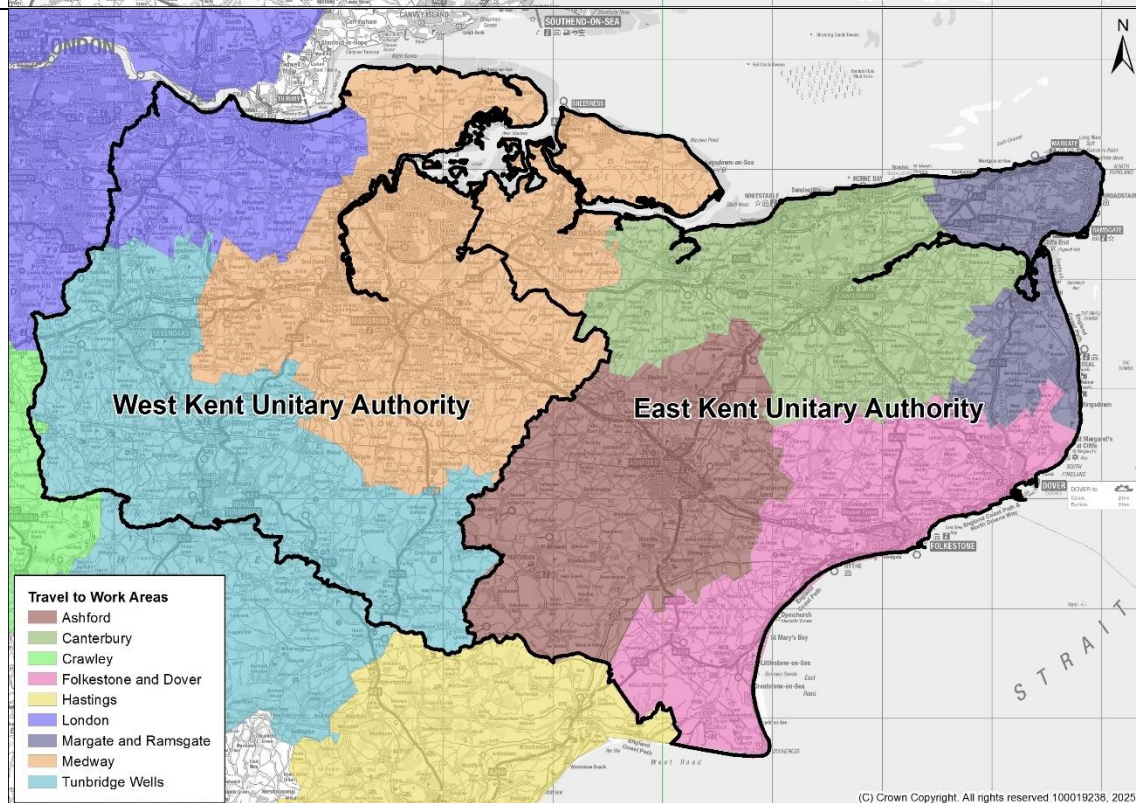
\*Two estimates based off the % growth between 2022 and 2035 for each district from: a) the ONS Sub-National Population Projections and b) the KCC Housing Led Forecast. Weighted by each district's contribution towards the UA's total population (2022 MYE).



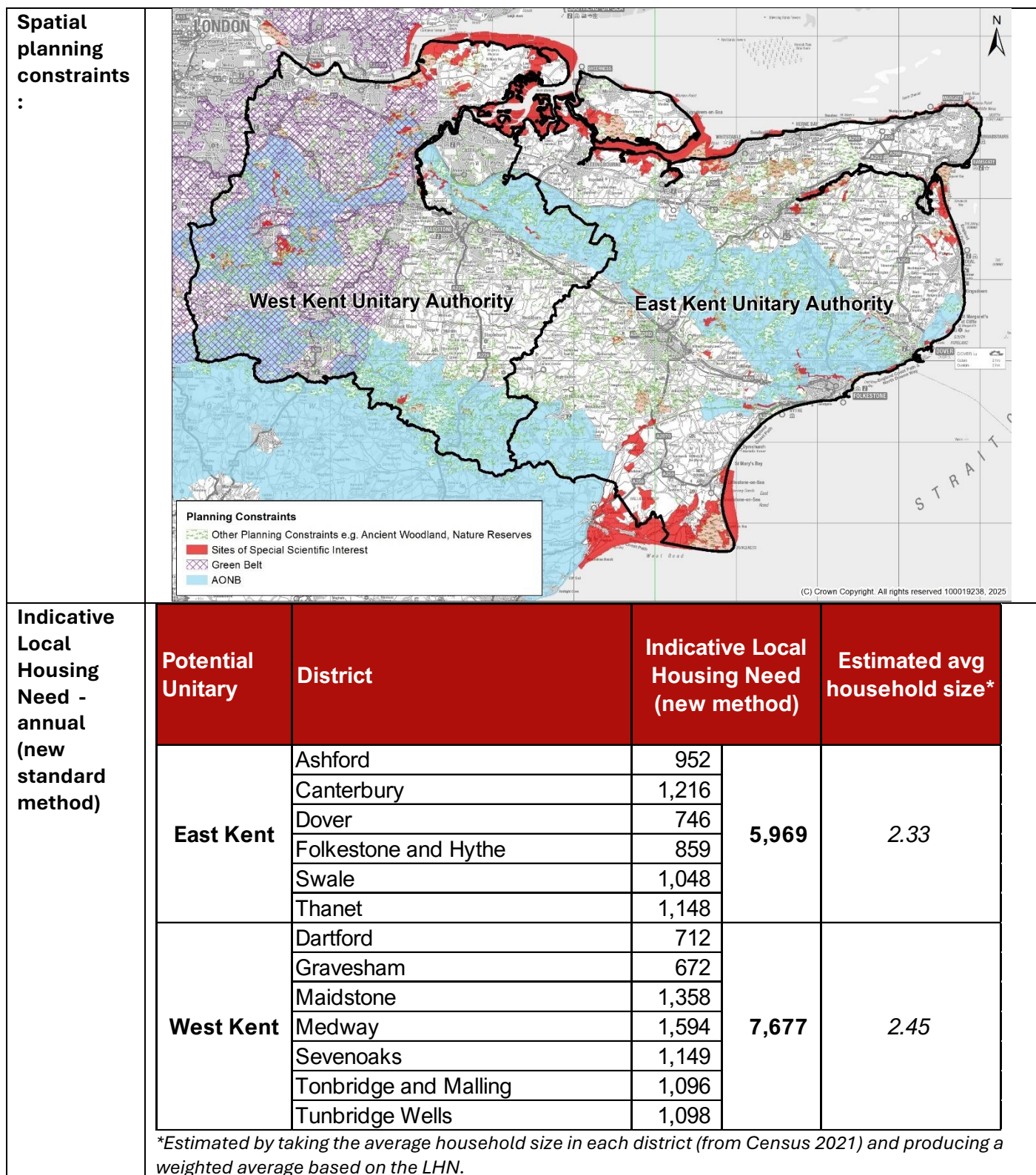
**NHS Health  
& Care  
Partnership  
alignment:**



**Travel to  
Work  
Areas:**







### Population composition

	East	West	Kent	England & Wales
Population aged 0-15	17.9%	20.6%	19.4%	18.4%
Population aged 16-64	59.8%	61.4%	60.7%	62.8%
Population aged 65+	22.3%	18.1%	19.9%	18.8%

*\*based on mid-2023 population estimate*

## Deprivation

Index of Multiple Deprivation 2019 (combining indicators under seven different domains of deprivation: Income Deprivation; Employment Deprivation; Education Skills and Training Deprivation; Health Deprivation and Disability; Crime; Barriers to Housing and Services and Living Environment Deprivation).

	East	West	Kent
% LSOAs in top 10%	9.8%	3.2%	6.1%

## Disability benefit claimants

Proportion of working age people claiming disability benefits (AA+DLA+PIP) from the DWP.

	East	West	Kent	England & Wales
% of 16-64s claiming AA/DLA/PIP	21.7%	15.7%	18.2%	17.2%

## Unemployment

Proportion of people receiving benefits for unemployment (Jobseekers Allowance and out of work Universal Credit claimants)

	East	West	Kent	England & Wales
Unemployment: % of 18-64s claiming	4.0%	3.5%	3.7%	4.3%
Youth unemployment: % of 18-24s claiming	6.3%	5.9%	6.1%	5.5%

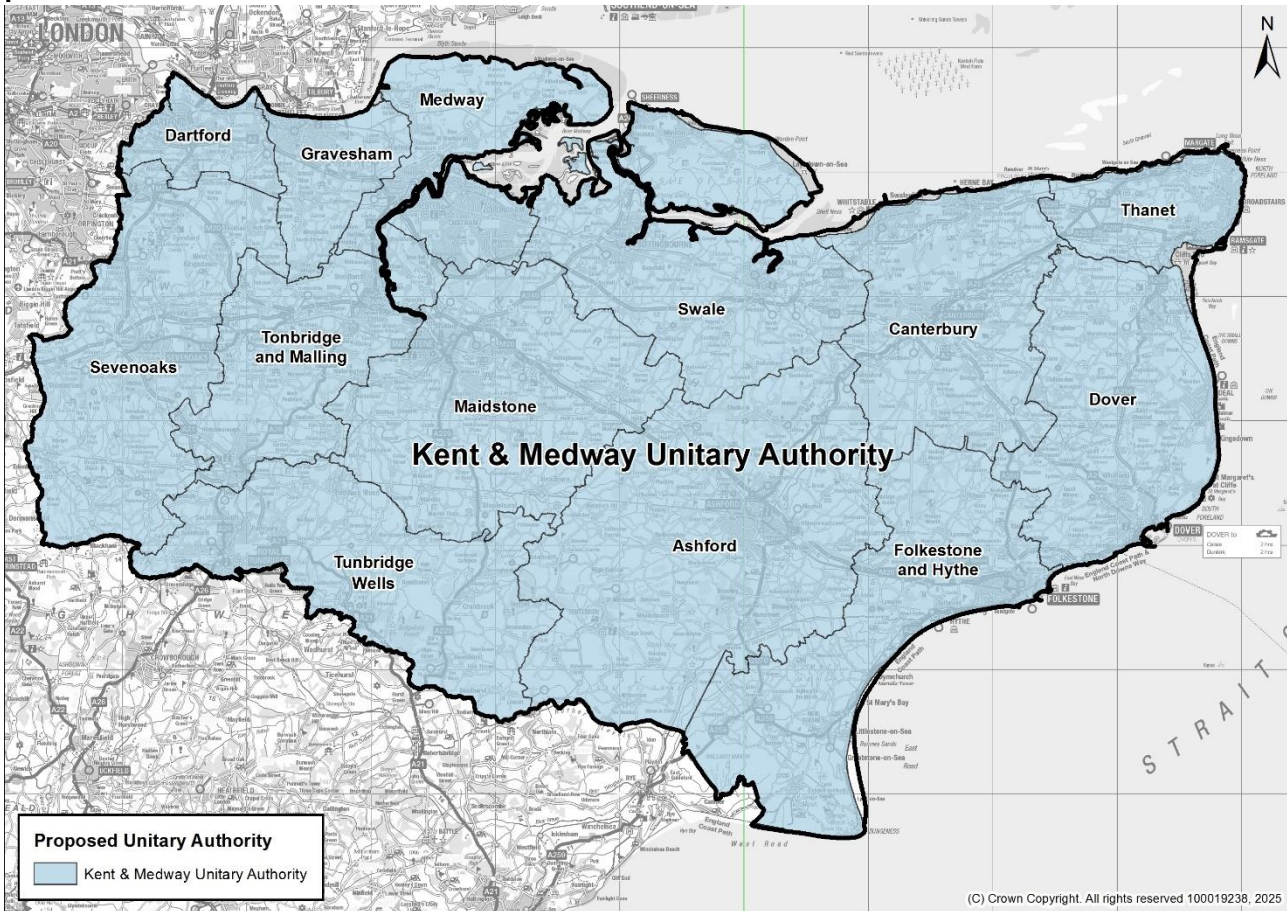
## Qualifications (from Census 2021)

Highest level of Qualification of people aged 16+ from the 2021 Census.

	East	West	Kent	England & Wales
% with Level 2 qualification or higher	66.6%	69.1%	68.0%	69.4%
% with Level 4 qualification or higher	28.0%	31.1%	29.8%	33.8%

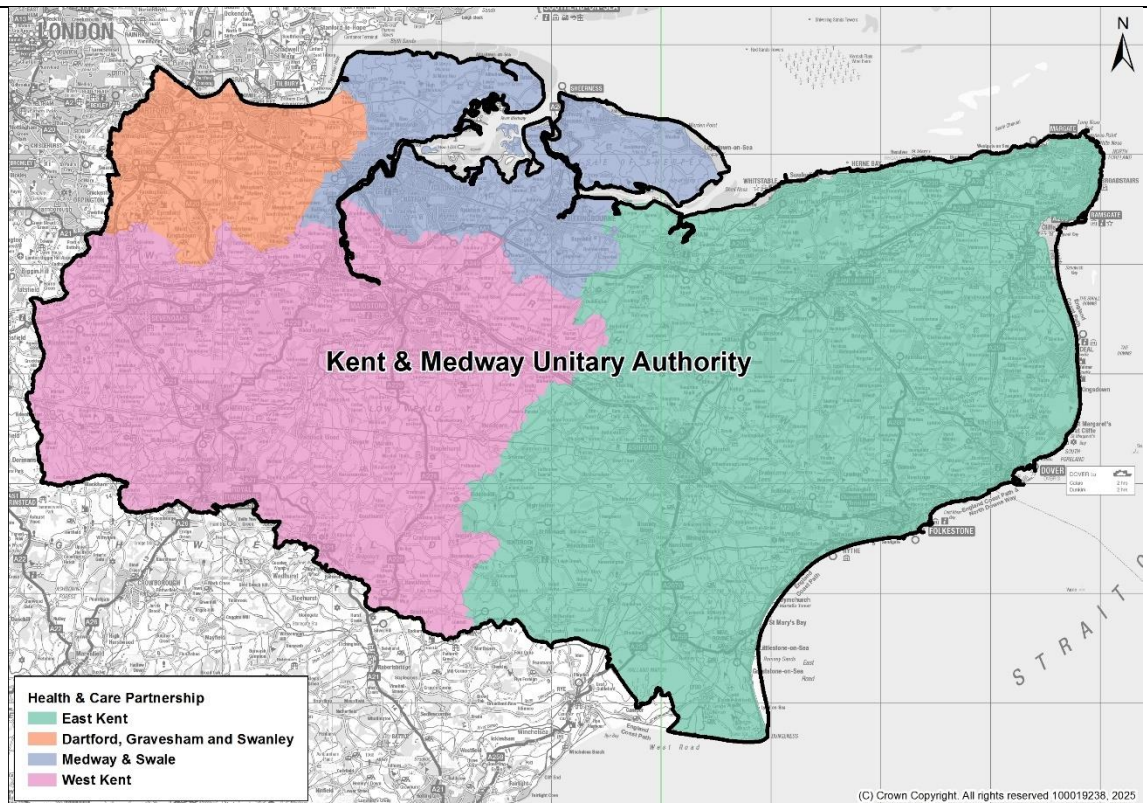


## Model 6 (one unitary - benchmark, Kent)

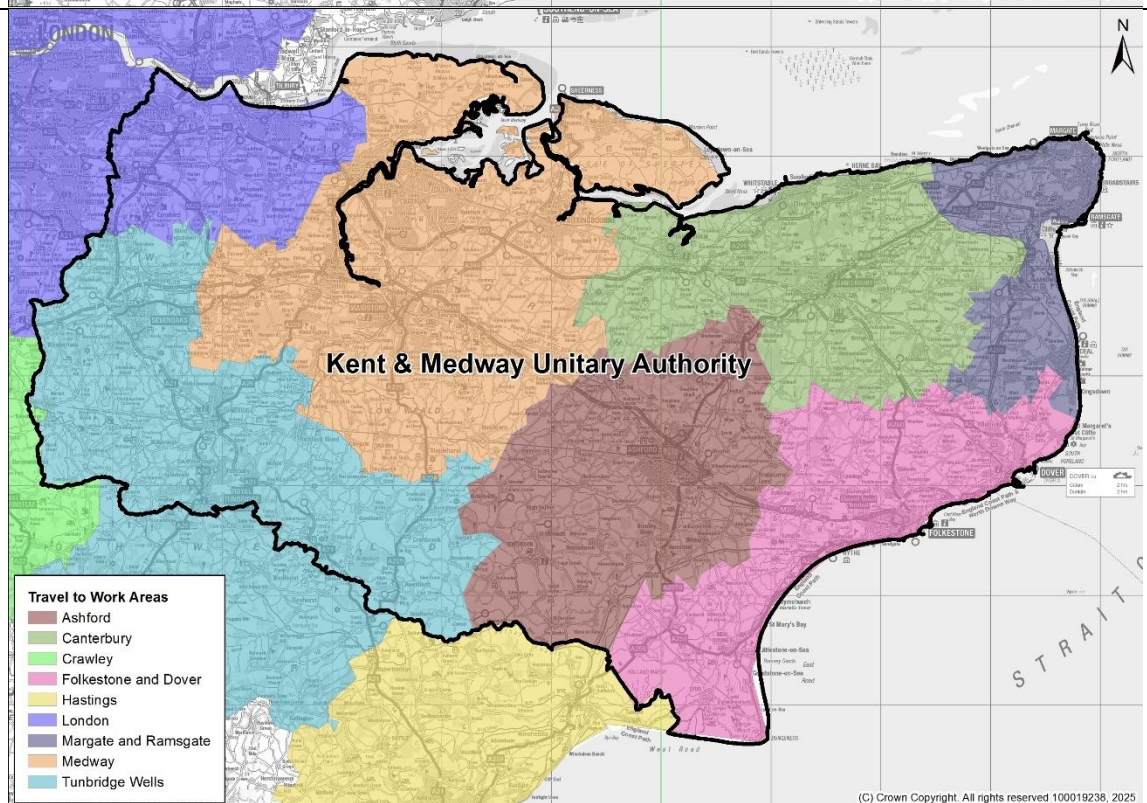
Model 6 (one unitary, Kent):	Whole of Kent (including Medway)																																		
Map	 <p>The map displays the geographical area of the Kent &amp; Medway Unitary Authority. The area is shaded in light blue and includes the following districts: Dartford, Gravesham, Medway, Swale, Canterbury, Dover, Thanet, Maidstone, Ashford, Folkestone and Hythe, Tunbridge Wells, Tonbridge and Malling, and Sevenoaks. A legend in the bottom left corner identifies the shaded area as the 'Proposed Unitary Authority'. The map also shows the surrounding regions of London to the west and the English Channel to the south, with a north arrow in the top right corner.</p>																																		
Population:	<table><tr><th>Potential Unitary</th><th>District</th><th>District population (mid-2022)</th><th>Unitary population (mid-2022)</th><th>Potential growth by 2035*</th></tr><tr><td rowspan="13">Kent</td><td>Ashford</td><td>135,610</td><td rowspan="13">1,875,893</td><td rowspan="13">132k to 270k</td></tr><tr><td>Canterbury</td><td>157,550</td></tr><tr><td>Dartford</td><td>118,820</td></tr><tr><td>Dover</td><td>117,473</td></tr><tr><td>Folkestone and Hythe</td><td>110,237</td></tr><tr><td>Gravesham</td><td>106,970</td></tr><tr><td>Maidstone</td><td>180,428</td></tr><tr><td>Medway</td><td>282,702</td></tr><tr><td>Sevenoaks</td><td>121,106</td></tr><tr><td>Swale</td><td>154,619</td></tr><tr><td>Thanet</td><td>140,689</td></tr><tr><td>Tonbridge and Malling</td><td>133,661</td></tr><tr><td>Tunbridge Wells</td><td>116,028</td></tr></table>	Potential Unitary	District	District population (mid-2022)	Unitary population (mid-2022)	Potential growth by 2035*	Kent	Ashford	135,610	1,875,893	132k to 270k	Canterbury	157,550	Dartford	118,820	Dover	117,473	Folkestone and Hythe	110,237	Gravesham	106,970	Maidstone	180,428	Medway	282,702	Sevenoaks	121,106	Swale	154,619	Thanet	140,689	Tonbridge and Malling	133,661	Tunbridge Wells	116,028
Potential Unitary	District	District population (mid-2022)	Unitary population (mid-2022)	Potential growth by 2035*																															
Kent	Ashford	135,610	1,875,893	132k to 270k																															
	Canterbury	157,550																																	
	Dartford	118,820																																	
	Dover	117,473																																	
	Folkestone and Hythe	110,237																																	
	Gravesham	106,970																																	
	Maidstone	180,428																																	
	Medway	282,702																																	
	Sevenoaks	121,106																																	
	Swale	154,619																																	
	Thanet	140,689																																	
	Tonbridge and Malling	133,661																																	
	Tunbridge Wells	116,028																																	
<p><i>*Two estimates based off the % growth between 2022 and 2035 for each district from: a) the ONS Sub-National Population Projections and b) the KCC Housing Led Forecast. Weighted by each district's contribution towards the UA's total population (2022 MYE).</i></p>																																			



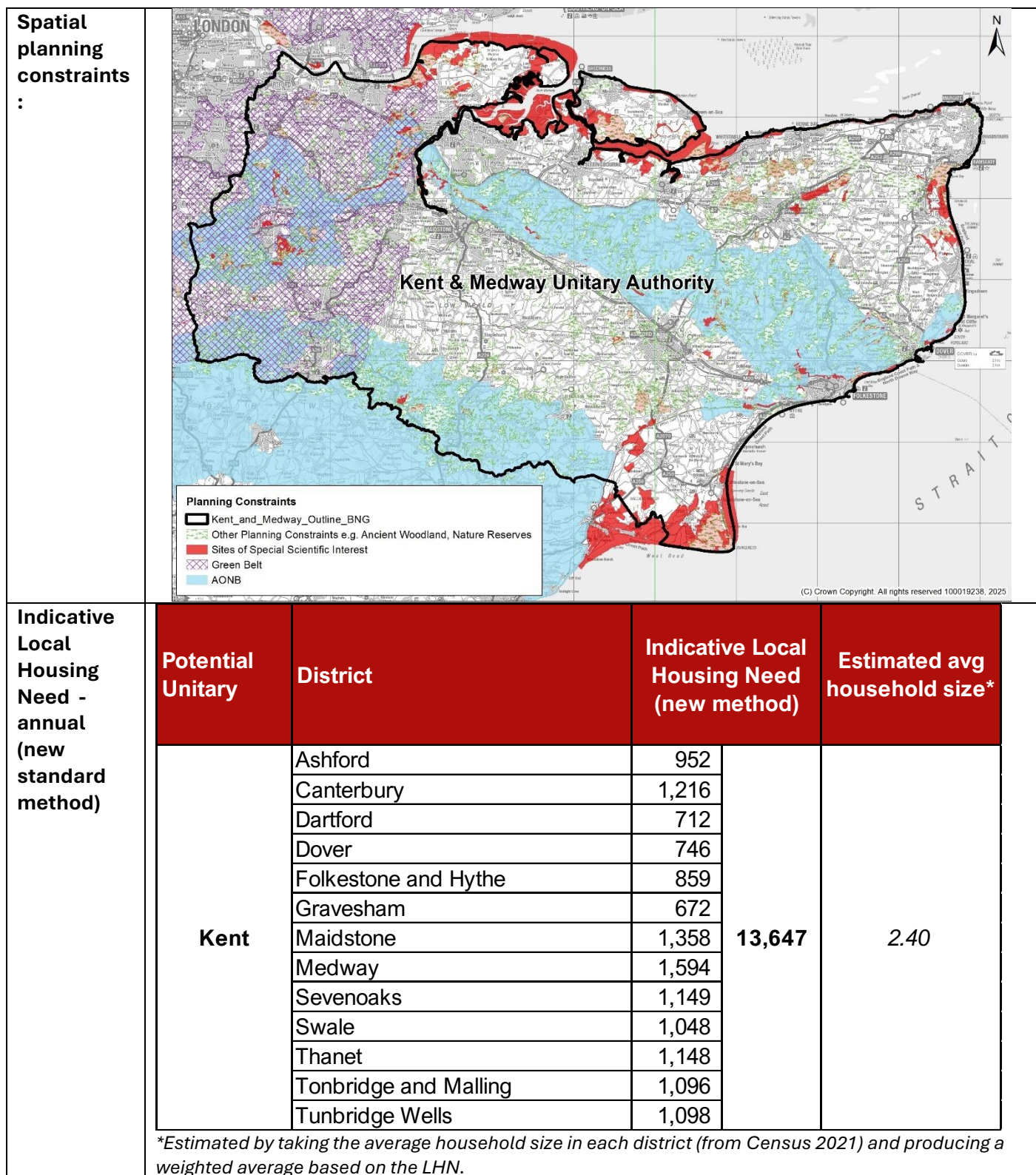
**NHS Health  
& Care  
Partnership  
alignment:**



**Travel to  
Work  
Areas:**







## Population composition

	Kent	England & Wales
Population aged 0-15	19.4%	18.4%
Population aged 16-64	60.7%	62.8%
Population aged 65+	19.9%	18.8%

*\*based on mid-2023 population estimate*

## Deprivation

Index of Multiple Deprivation 2019 (combining indicators under seven different domains of deprivation: Income Deprivation; Employment Deprivation; Education Skills and Training Deprivation; Health Deprivation and Disability; Crime; Barriers to Housing and Services and Living Environment Deprivation).

	Kent
% LSOAs in top 10%	6.1%

## Disability benefit claimants

Proportion of working age people claiming disability benefits (AA+DLA+PIP) from the DWP.

	Kent	England & Wales
% of 16-64s claiming AA/DLA/PIP	18.2%	17.2%

## Unemployment

Proportion of people receiving benefits for unemployment (Jobseekers Allowance and out of work Universal Credit claimants)

	Kent	England & Wales
Unemployment: % of 18-64s claiming	3.7%	4.3%
Youth unemployment: % of 18-24s claiming	6.1%	5.5%

## Qualifications (from Census 2021)

Highest level of Qualification of people aged 16+ from the 2021 Census.

	Kent	England & Wales
% with Level 2 qualification or higher	68.0%	69.4%
% with Level 4 qualification or higher	29.8%	33.8%